



Thermographic Inspection at

ABC Corporation

123 Main Street, Anytown, USA

March 5, 2025

By

Certified Infrared Inc.

	Thermography Inspection at ABC Corporation	Date: March 5, 2025
---	---	--------------------------------

Inspection Site Information	
Customer	ABC Corporation
Address	123 Main Street, Anytown, USA
Company Contact	John Doe
Phone number	888-888-8888
E-mail address	JDoe@email.com
Thermographer	Thermographer


Information contained in the following report is the result of a Thermographic Survey conducted by Certified Infrared Inc.

In most cases, the first manifestation of an electrical problem is excess heat in a local area. Thermographic inspection of electrical systems can pinpoint problems in early stages. The Maintenance Staff can then evaluate thermographic findings and plan to take corrective action before a major problem occurs which may damage or shut down essential equipment.

Overview of Fault Rating:

0: Normal	No action
1: Low grade	To be monitored – Plan new inspection
2: Medium grade	Repair at scheduled shut down
3: Serious	Repair ASAP
4: Critical	Repair immediately

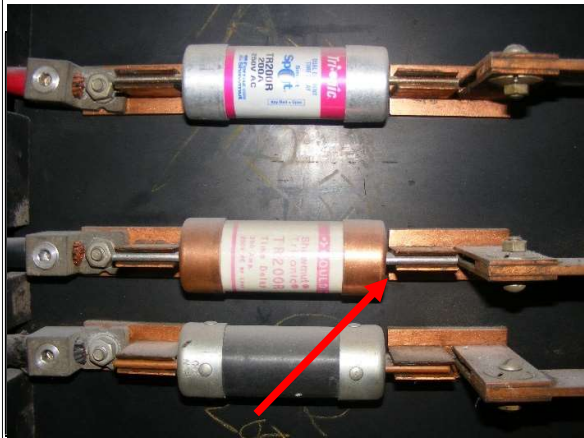


	Thermography Inspection at ABC Corporation	Date: March 5, 2025
---	---	--------------------------------

Summary of Inspection Issues

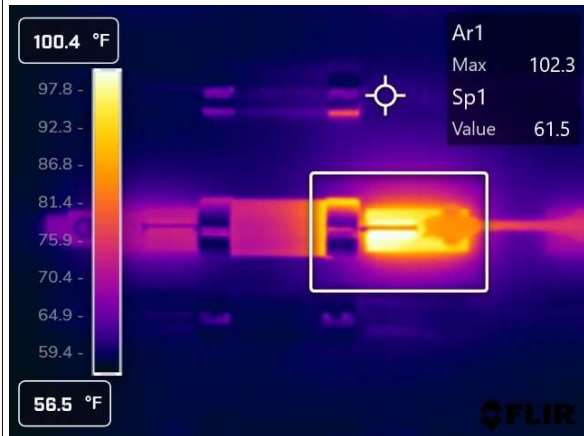
Location	Equipment Name	Fault Level	Page Number	Temperature Rise
2 nd Floor, Main Switch Gear Room	Panel P-CB	3	4	40.8°F
20 th Floor, North Gym Electrical Room	H6	2	5	19.9°F
18 th Floor, Control Room	BKT4A	2	6	13.6°F
9 th Floor, Electrical Room A	H1A	3	7	51.3°F
7 th Floor, Distribution Switch Gear Room	LP-3C	3	8	54.3°F
2 nd Floor, Men's Room Closet	2CV	2	9	7.9°F
2 nd Floor, Server Room	SC-3-12	2	10	10.0°F
19 th Floor, Electric Room (A)	P1-B	4	11	484.9°F

Photo 1



Location	2 nd Floor, Main Switch Gear Room
Equipment Type	Switchboard
Equipment Name	Panel P-CB
Equipment Size	200a, 277/480v
Problem Item	Fuse Clip
Fault Level	3
Actual Load (A)	A: 35.2, B: 34.7, C: 34.6

Thermogram



Sp1 Temperature	61.5 °F
Ar1 Temperature	102.3 °F
Temperature Rise	40.8°F

Analysis & Recommended action:

C Phase, Line Side

Loose fuse jaws / clips. Remove fuse. Clean contact area of fuse. Adjust spring tension if applicable and/or replace fuse jaws/clips.

High resistance connection. Clean and tighten all related connections.

Inspected by: **Thermographer**

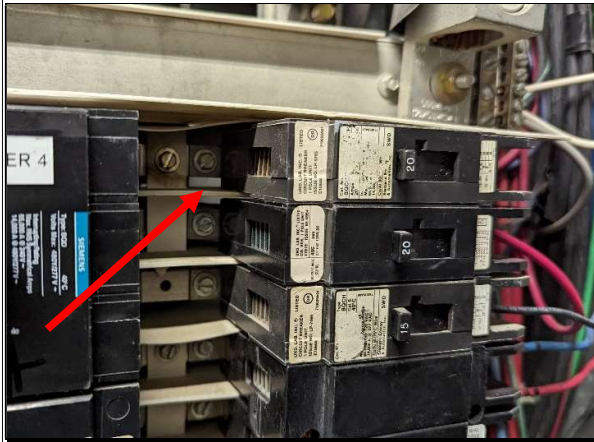
Date: March 5, 2025

Repaired by:

date:

Comment:

Photo 2



Location	20 th Floor, North Gym Electrical Room
Equipment Type	Panelboard
Equipment Name	H6
Equipment Size	400a, 120/208v
Problem Item	Circuit 2
Fault Level	2
Actual Load (A)	A: 16.0 B: 16.0, C: 0.2

Thermogram



Sp1 Temperature	76.9 °F
Ar1 Temperature	96.8 °F
Temperature Rise	19.9 °F

Analysis & Recommended action:

A Phase, Line Side

Internal Breaker Problem. Replace breaker.

Note: Visible Scorch mark on panel bus.

Inspected by: Thermographer

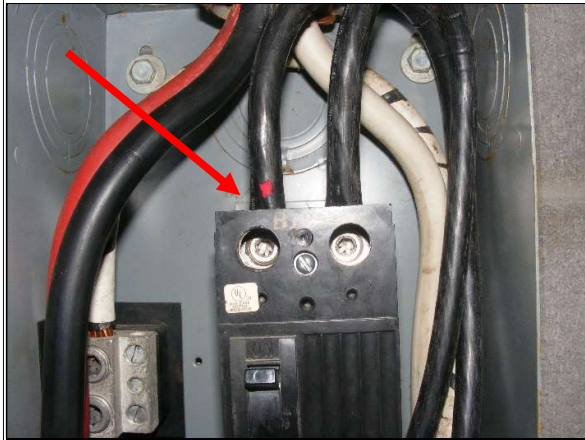
Date: March 5, 2025

Repaired by:

date:

Comment:

Photo 3



Location	18 th Floor, Control Room
Equipment Type	Breaker
Equipment Name	BKT4A
Equipment Size	225a, 240v
Problem Item	Terminal Connection Phase A
Fault Level	2
Actual Load (A)	A: 21, B: 24

Thermogram



Sp1 Temperature	80.1 °F
Ar1 Temperature	93.7 °F
Temperature Rise	13.6°F

Analysis & Recommended action:

A Phase, Line Side.

Loose wire connection. Disassemble, inspect lug and cable end. Clean, reassemble, and torque to proper specification.

High resistance connection. Clean and tighten related connection.

Inspected by: Thermographer

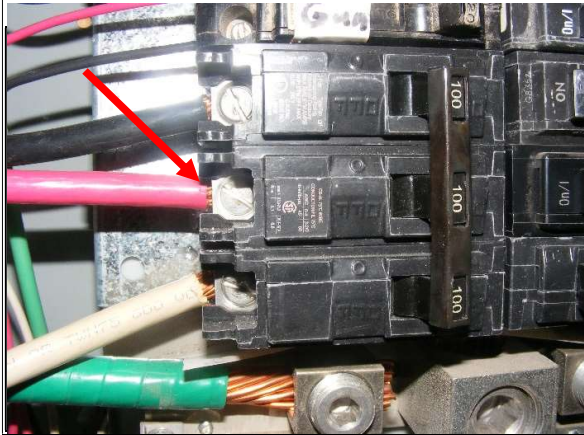
Date: March 5, 2025

Repaired by:

date:

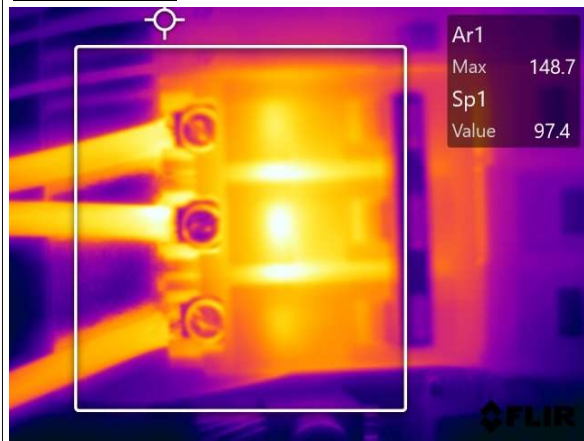
Comment:

Photo 4



Location	9 th Floor, Electrical Room A
Equipment Type	Panelboard
Equipment Name	H1A
Equipment Size	400a, 120/208v
Problem Item	Breakers 33, 35, 37
Fault Level	3
Actual Load (A)	A: 100.7, B: 102.1, C: 102.2

Thermogram



Sp1 Temperature	97.4 °F
Ar1 Temperature	148.7 °F
Temperature Rise	51.3 °F

Analysis & Recommended action:

A, B, & C Phases, Load Side.

Overload. Load on circuit should be reduced.

Inspected by: **Thermographer**

Date: March 5, 2025

Repaired by:

date:

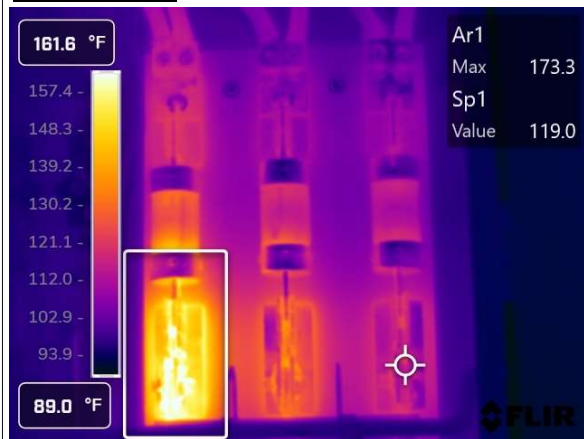
Comment:

Photo 5



Location	7 th Floor, Distribution Switch Gear Room
Equipment Type	Fused Disconnect Switch
Equipment Name	LP-3C
Equipment Size	600a, 480v
Problem Item	Hinge Point
Fault Level	3
Actual Load (A)	A: 58, B: 62, C: 61

Thermogram



Sp1 Temperature	119.0 °F
Ar1 Temperature	173.3 °F
Temperature Rise	54.3 °F

Analysis & Recommended action:

A Phase, Line Side

Pivot (Hinge) point of switch is loose. Disassemble, inspect, clean and adjust tightness of hinge point.

High Resistance Connection. Clean and tighten all related connections.

Inspected by: Thermographer

Date: March 5, 2025

Repaired by:

date:

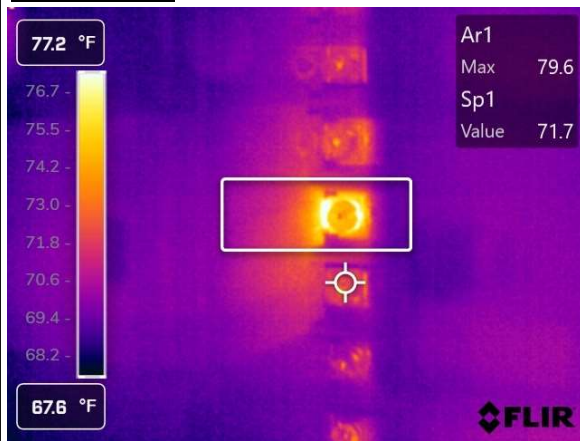
Comment:

Photo 6



Location	2 nd Floor, Server Room
Equipment Type	Power Distribution Unit
Equipment Name	2CV
Equipment Size	225a, 120/208v
Problem Item	Breaker 13, S28H
Fault Level	2
Actual Load (A)	A: 12.1, B: 12.0, C: 11.7

Thermogram



Sp1 Temperature	71.7 °F
Ar1 Temperature	79.6 °F
Temperature Rise	7.9

Analysis & Recommended action:

Line Side.

Poor panel bus connection. Remove breaker, clean bus area, check tightness of connection and reinstall. Replace breaker if necessary.

High resistance connection. Clean and tighten all related connections.

Inspected by: Thermographer

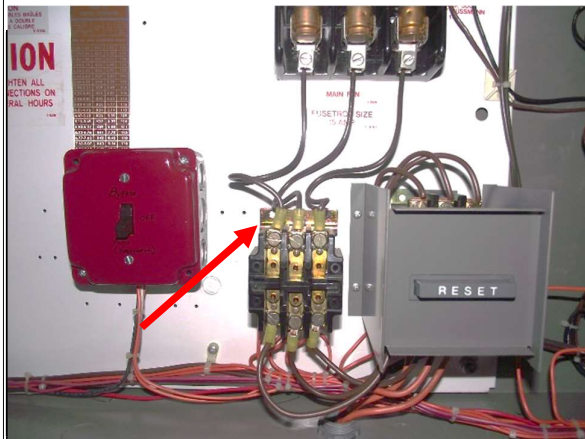
Date: March 5, 2025

Repaired by:

date:

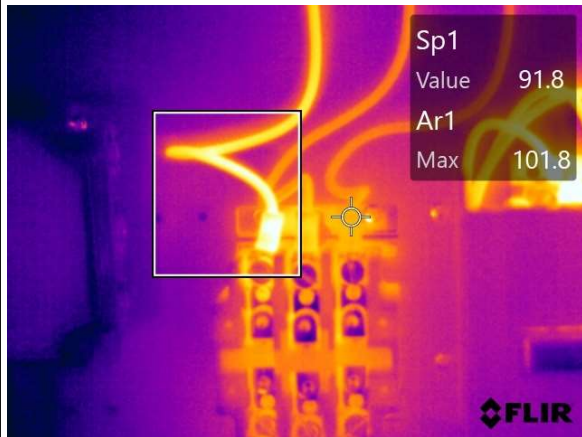
Comment:

Photo 7



Location	2 nd Floor, Server Room
Equipment Type	CRAC
Equipment Name	SC-3-12
Equipment Size	15a, 480v
Problem Item	Thermal Block
Fault Level	2
Actual Load (A)	A: 8.0, B: 8.1, C: 8.0

Thermogram



Sp1 Temperature	91.8 °F
Ar1 Temperature	101.8 °F
Temperature Rise	10.0 °F

Analysis & Recommended action:

A Phase

Thermal block off fuse labeled 'main fan'.

Bad wire terminal. Redo crimp connection and retorquing connection.

Inspected by: Thermographer

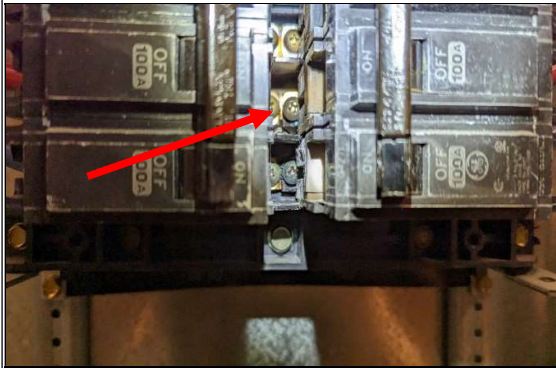
Date: March 5, 2025

Repaired by:

date:

Comment:

Photo 8



Location	19 th Floor, Electrical Room (A)
Equipment Type	Panelboard
Equipment Name	P1-B
Equipment Size	400a, 120/208v
Problem Item	Circuit 18
Fault Level	4
Actual Load (A)	A: 17.2, B: 17.0, C: 8.7

Thermogram



Sp1 Temperature	92.5 °F
Ar1 Temperature	577.4 °F
Temperature Rise	484.9 °F

Analysis & Recommended action:

Phase C, Line Side.

Poor panel bus connection. High resistance connection. Breaker is compromised and should be replaced. Inspect panel bus for damage.

Inspected by: Thermographer

Date: March 5, 2025

Repaired by:

date:

Comment:

	Thermography Inspection at ABC Corporation	Date: March 5, 2025
---	--	------------------------

ABC Corporation Equipment List

22nd Floor

Elevator Machine Room

Fused Disconnect Switch	PE1	
Fused Disconnect Switch	PE2	
Fused Disconnect Switch	PE3	
Fused Disconnect Switch	PE4	
Fused Disconnect Switch	SE1	
Fused Disconnect Switch	Cab Lights PE1	
Fused Disconnect Switch	Cab Lights PE2	
Fused Disconnect Switch	Cab Lights SE1	

21st Floor

Mechanical Room

Panelboard	HR1	
Panelboard	SDPH2	
Panelboard	HRA	
Disconnect Switch	P4	
Disconnect Switch	P3	
Disconnect Switch	CT 1B	
Disconnect Switch	CT 1A	
Disconnect Switch	CT 1B	
Disconnect Switch	CT 1A	
Disconnect Switch	NO ID (200A)	
Disconnect Switch	P2	
Disconnect Switch	P5	
Disconnect Switch	P6	
Distribution Panel	HRA SEC 1	
Distribution Panel	HRA SEC 2	

20th Floor

New Gym Electrical Room

Distribution Panel	ELSDP2	
Panelboard	ELSRI	
Panelboard	H6	Photo 1
Bus Duct		

	Thermography Inspection at ABC Corporation	Date: March 5, 2025
---	---	--------------------------------

19th Floor

Electrical Room (A)

Panelboard	EQD	
Panelboard	EQDP2	
Panelboard	EQ7	
Panelboard	P1-B	Photo 8

18th Floor

Control Room

Breaker	BKT4A	Photo 2
Breaker	BKT4B	

17th Floor

Penthouse Electrical Room

Fused Disconnect Switch	FID32	
Bus Duct		

16th Floor

North Mechanical Closet (A)

Bus Duct		
Panelboard	BRD	

15th Floor

Electrical Room (A)

Bus Duct		
Panelboard	EC-9	
Panelboard	EC-8	
Switchboard	RS	

14th Floor

Electrical Room

Fused Disconnect Switch	52 nd Floor Meter Bank	
Bus Duct		

 CERTIFIED INFRARED	Thermography Inspection at ABC Corporation	Date: March 5, 2025
--	---	--------------------------------

12th Floor

Bus Duct Room

Bus Duct		
----------	--	--

11th Floor

Compactor Room

Disconnect Switch	EQBP	
Panelboard	EQ2	
Disconnect Switch	MCCDS	
Motor Control Center	Section 1	
Motor Control Center	Section 2	
Motor Control Center	Section 3	
Bust Duct		

10th Floor

North Mechanical Room (A)

Bus Duct		
----------	--	--

9th Floor

Electrical Room (A)

Panelboard	H2A	
Panelboard	H2	
Panelboard	H2 SEC 2	
Panelboard	HB	
Panelboard	H1A	Photo 4
Disconnect Switch	T EQ1	
Bus Duct		

8th Floor

Bus Duct Room

Bus Duct		
----------	--	--

	Thermography Inspection at ABC Corporation	Date: March 5, 2025
---	---	--------------------------------

7th Floor

Distribution Switch Gear Room

Switchgear	Sec 1	
Switchgear	Sec 2	
Switchgear	DE 21	
Fused Disconnect Switch	LP-3C	Photo 5
Service Disconnect	9-22	
Service Disconnect	Fire Pump Low Zone	
Service Disconnect	Fire Pump High Zone	
Bus Duct		

6th Floor

Fire Pump Room

Panelboard	CWP Panel	
Panelboard	Jockey Pump Panel	
Automatic Transfer Switch	Fire Pump Ats	
Panelboard	Fire Pump Panel	
Control Panel	FO Pumps	
Disconnect Switch	Domestic Water Pump	
Bust Duct		

5th Floor

Electrical Closet

Panelboard	LS	
Panelboard	RS	
Disconnect Switch	NO ID	
Bust Duct		

4th Floor

Electrical Closet (A)

Panelboard	LS	
Panelboard	RS	
Disconnect Switch	NO ID	
Transformer	150KVA	
Bust Duct		

Electrical Closet (B)

Panelboard	LS	
Disconnect Switch	LP-1	
Transformer	150KVA	

	Thermography Inspection at ABC Corporation	Date: March 5, 2025
---	---	--------------------------------

3rd Floor

Electrical Room

Panelboard	LPL	
Panelboard	LPB-A	
Panelboard	B	
Panelboard	C	
Bust Duct		

2nd Floor

Main Switch Gear Room

Panelboard	H1	
Panelboard	H2	
Panelboard	H3	
Fused Disconnect Switch	Panel P-CB	Photo 3
Switchgear	Sec 1	
Switchgear	Sec 2	
Switchgear	Sec 3	
Service Disconnect	9-22	

Server Room

Panelboard	RP-1A	
Panelboard	RP-1B	
Power Distribution Unit	2CV	Photo 6
Power Distribution Unit	ELP-1-A	
Power Distribution Unit	LP-1-A	
Power Distribution Unit	LP-1	
Panelboard	LP-1B	
CRAC	SC-3-10	
CRAC	SC-3-11	
CRAC	SC-3-12	Photo 7
CRAC	SC-3-13	

1st Floor

East Mechanical Room

Control Panel	LF1	
Nonfused Disconnect Switch	LFIDS	
Variable Frequency Drive	AHU3	
Control Panel	SCR	

	Thermography Inspection at ABC Corporation	Date: March 5, 2025
---	---	--------------------------------

Basement

Electrical Room

Control Panel	LF2	
Nonfused Disconnect Switch	LF2DS	
Variable Frequency Drive	AHU2	
Control Panel	SCR	